



PCI/PSI FOOTSWITCH

GS Automation's PCI/PSI footswitch has spring contacts and has one normally closed NC and one normally open NO contact (snap or slow action). Its housing is yellow/black Polypropylene (or other colors i.e. Grey/Orange on request) with IP54 degree of protection (IP65 on request). Double/Triple foot switches on Iron Plate -Safety Lever and Device to maintain lever in lowered position complete all available features. The PCI/PSI foot switch fulfills all relevant international standards for worldwide use in applications from all industries.

Main features

Material	Polypropylene.
With housing	PCI series
Without housing	PSI series
Color	Black base, Housing, yellow, grey RAL7035, orange
Weight	
with housing	0,700 Kg
without housing	0,640 Kg
Sizes	
with housing	234 x 150 x 158 mm
without housing	234 x 150 x 62 mm
Conduit entry	M20
Protection degree	IP54 (IP65 on request)

Electical data

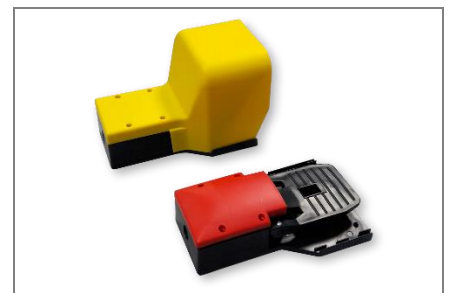
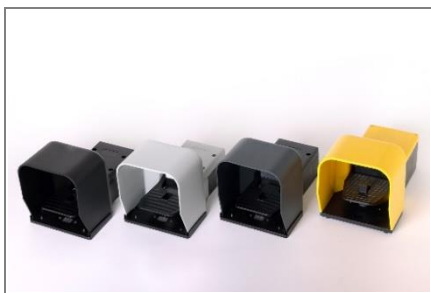
Ith	10 A
IEC	60947-5-1 – A600 Q300
Ui	690 VAC
Contact resistance	< 10 Ohm
Mechanical life	> 10 millions cycles
Working temperature	-25 °C to +70 °C

Implementation

- N. 1 snap action (or slow action) contact 1NC/1NO.
- N. 2 snap action (or slow action) contact 1NC/1NO.
- Double / triple footswitches on thermoplastic or iron plate.
- Safety lever.
- Device to mainai lever in lowered position

Code scheme

EF	-	XXX	-	KK	-	HH
ELECTRICAL FOOTSWITCH		XXX – FAMILY		KK – CONTACT OPTION		HH – Safety Option
		PCI/PSI PMP/PMS PCK/PSK PMXP-PMXS PCR/PSR PML PMM S (no protection)		00 – 1 NO+1 NC snap action 02 – 2 NO+2 NC snap action 01 – 1 NO+1 NC slow action 03 – 2 NO+2 NC slow action		PI – Safety Lever B – Bistable



GS AUTOMATION

20099 SESTO SAN GIOVANNI – ITALY – VIA CARDUCCI 221/23-24 – PHONE: +39 02 240 8127
www.gs-automation.eu – email: gs@gs-automation.eu